



**Payment module integration
for Shopware 4.x and 5.x**

Contents

1. RELEASE NOTES.....	3
2. MODULE FEATURES.....	4
3. PREREQUISITES.....	5
4. INSTALLATION OF THE PAYMENT MODULE.....	6
4.1. Updating the module.....	6
4.2. Installation of the module.....	6
4.3. Module selection for a shipping mode.....	6
5. CONFIGURING THE PAYMENT MODULE.....	8
6. SETTING UP THE INSTANT PAYMENT NOTIFICATION URL.....	10
6.1. Setting up the Instant Payment Notification.....	10
6.2. Testing the Instant Payment Notification URL.....	11
7. PROCEEDING TO TEST PHASE.....	12
8. SHIFTING THE SHOP TO PRODUCTION MODE.....	13
9. DOCUMENTATION UPDATE.....	14

1. RELEASE NOTES

Version	Date	Comments
1.2.0	6/27/2018	<u>New features</u> <ul style="list-style-type: none">• Compatibility with 5.x latest versions.• Addition of the "Signature algorithm" field to allow the selection of SHA-256 algorithm.• Display generic error message for unexpected errors.• translations updated
1.1.1	10/10/2017	<ul style="list-style-type: none">• Compatibility with PHP 5.3
1.1	11/24/2016	<ul style="list-style-type: none">• Bug fix: correction of the payment additional description which is displayed in the order mail.• Compatibility with ShopWare 5.2.x versions.• Set order to "In process" and payment to "Fully paid" status when payment is successful.• Module code refactoring.• Compatibility with Shopware 4.0.• Improve of order processing in multistore mode.• Remove control over certificate format modified on the gateway.• Correct and improve module code to pass ShopWare Store code review.
1.0	3/16/2016	Initial version.

This document and its contents are confidential. It is not legally binding. No part of this document may be reproduced and/or forwarded in whole or in part to a third party without the prior written consent of Lyra Network. All rights reserved.

2. MODULE FEATURES

The payment module offers the following features:

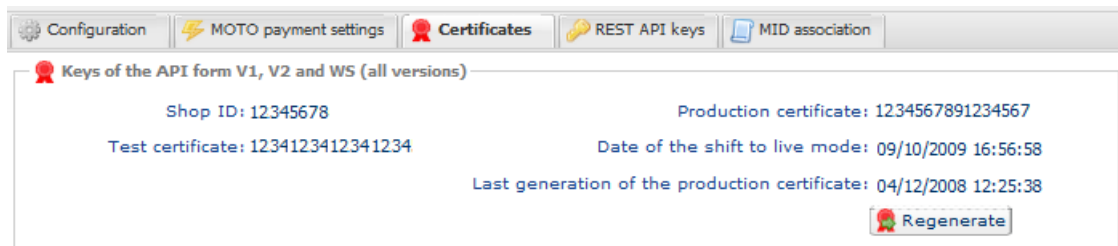
- Compatibility with the Shopware (Community Edition), version 4.x-5.x,
- Multi-language compatibility
- Multi-currency compatibility
- Selective 3D-Secure depending on the order amount,
- Automatic redirection to the shop at the end of payment
- Systematic registration of orders at the end of payment via a silent URL (Instant Payment Notification URL)
- Definition of a minimum/maximum amount for each payment method,
- Immediate payment

3. PREREQUISITES

Before integrating the payment module, please make sure that you are in possession of the following elements:

- **Payment module file:** PayZen_Shopware_4.x-5.x_v1.2.0.zip
- **Your shop ID**
- **Test or production certificate**

The shop ID and the certificates are available in the PayZen Back Office (Menu: **Settings > Shop > Certificates**)



Your PayZen Back Office is available at this address:

<https://secure.payzen.eu/vads-merchant/>

4. INSTALLATION OF THE PAYMENT MODULE

4.1. Updating the module

To update the payment module, you must first uninstall and delete its previous version.

WARNING: Do not forget to save the parameters of your module before you uninstall it and make sure you save the production certificate that is no longer visible in the PayZen Back Office.

Since the module version 1.10.0, a new parameter has been added: **Signature algorithm**. By default, this field is set to **SHA-256** and its value must be the same as the selected algorithm in the PayZen Back Office (**Settings > Shop**). If they are different, you will have to change the configuration in the PayZen Back Office.

1. Open the Plugin Manager (**Configuration > Plugin Manager**),
2. Click on **Installed** in the **Management** section of the menu.
3. Search for the PayZen module and click on **Uninstall**.
4. Click on **Delete** to install the module.
5. Refer to the next chapters to add and install the new version of the payment module.



4.2. Installation of the module

The PayZen payment module is installed via the **Plugin Manager** of Shopware.

1. Open the Plugin Manager (**Configuration > Plugin Manager**),
2. Click on **Installed** in the **Management** section of the menu.
3. Click on the **Upload plugin** button. In the new window, select the zip file of the payment module, then click **Upload plugin**,
The second method consists in copying the module via FTP. To do that, merge the **Frontend** folder with the **engine/Shopware/Plugins/Community/Frontend** folder,
4. In **Plugin Manager**, the module **PayZen Payment** appears in **Uninstalled**.
5. Click on **Install** to install the module.
6. The Plugin Manager requests to empty the cache: **Clear cache?**, click **Yes**.

4.3. Module selection for a shipping mode

Once the module has been installed, it must be selected for a shipping mode so that PayZen can be enabled as a payment method.

1. Go to **Configuration > Shipping costs**. The window **Shipping cost management** opens.
2. Choose a shipping method and click on  *Edit shipping costs*. A new window opens.
3. Click on the **Payments** tab.
4. In the column entitled **Available** situated on the left, select PayZen by clicking on it, then click on  to add PayZen to payment methods available for this shipping mode:

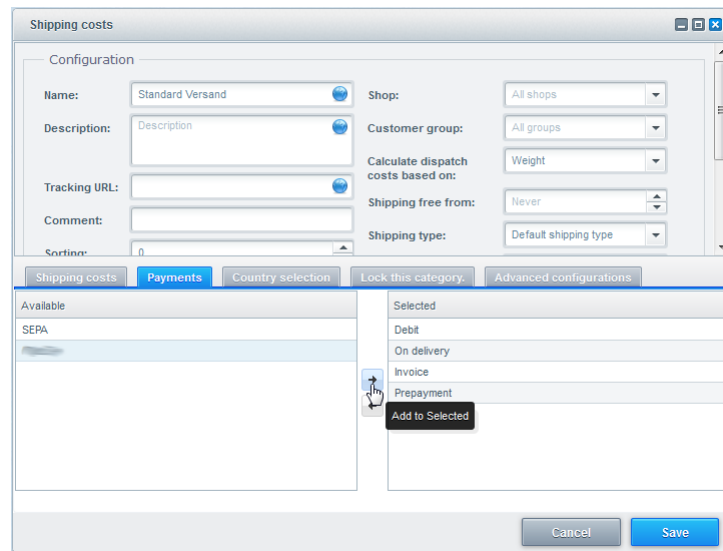


Figure 1: Module selection for a shipping mode

5. Click on **Save** to save the configuration.
6. Repeat the operation for all shipping modes for which you wish to offer PayZen.

5. CONFIGURING THE PAYMENT MODULE

1. Open the Plugin Manager (**Configuration > Plugin Manager**),
2. Click on **Installed** in the **Management** section of the menu.
3. The **PayZen Payment** module appears in **Installed** plugins. Click on **Open** to edit the configuration.

Access to the payment gateway	
Shop ID	Indicate the 8-digit shop ID provided in your Back Office (Menu: Settings > Shop > Certificates).
Test certificate	Indicate the test certificate provided in your Back Office (Menu: Settings > Shop > Certificates).
Production certificate	Indicate the production certificate provided in your Back Office (Menu: Settings > Shop > Certificates). Note that the production certificate will only become available after the test phase has been completed.
Mode	Allows to indicate the operating mode of the module (TEST or PRODUCTION) The PRODUCTION mode becomes available only after the test phase has been completed. The TEST mode is always available.
Signature algorithm	Algorithm used to compute the signature of the payment form. The algorithm must be the same as the selected algorithm in the PayZen Back Office (Settings > Shop). If they are different, you will have to change the configuration in the PayZen Back Office. WARNING: SHA256 algorithm must not be selected until it is not available in the PayZen Back Office.
Instant Payment Notification URL	Copy this URL into your Back Office (Menu Settings > Notification rules > Instant payment Notification URL at the end of payment): http://www.my-domain.com/payment_payzen/process
Payment page URL	This field is pre-populated by default: https://secure.payzen.eu/vads-payment/

Payment page	
Default languages	This option allows to choose the default language of the payment page in case the language of Shopware is not supported by PayZen. If the language(s) used by the Shopware is (are) implemented into PayZen, the payment page will be displayed in the language of Shopware when the buyer clicks on "Pay".
Available languages	Allows to customize the language displayed on the payment page. Buyer will be able to select a language when he is redirected on the payment page. If you do not select any language, all the languages will be displayed on the payment page. To select a language, press and hold the " Ctrl " key and click on the desired languages. <u>Available languages:</u> German, English, Chinese, Spanish, French, Italian, Japanese, Dutch, Polish, Portuguese, Russian, Swedish, Turkish.
Capture delay	By default, this parameter is configured in your Back Office. (Menu: Settings > Shop > Configuration - section: Capture delay) It is recommended to not populate this parameter.
Validation mode	Back Office Configuration: Recommended value. Allows to use the configuration defined in the Back Office. (Menu: Settings > Shop > Configuration – section: validation mode) Automatic: This value indicates that the payment will be captured in the bank automatically without any action on the merchant's part. Manual: This value indicates that transactions will have to be manually validated by the merchant in the Back Office.

Payment page	
	Warning: if the transaction has not been validated by the merchant before the expiration date, it will never be captured in the bank.
Card types	This option allows you to define the title of the payment method. The buyer will see this title when choosing a payment method. If your shop supports several languages, you can also define the title of the payment method for each language.

Selective 3DS	
Disable 3D Secure	Amount below 3DS will be disabled. Below this amount, 3DS rules from the risk assessment will not be applied. Leave empty to let the payment gateway decide if a 3DS authentication is required. WARNING: The value of this field will be taken into account only if the option "Selective 3D-Secure" is enabled for your PayZen shop. This option can only be enabled upon agreement of your bank. Some card types, such as MAESTRO, require a mandatory 3DS authentication. In this case, your configuration will not be taken into account.

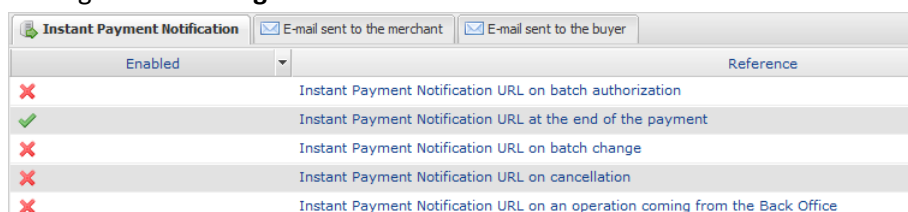
Return to shop	
Automatic redirection	This option allows to automatically redirect the buyer to the merchant website. This option depends on the following settings. This option is disabled by default.
Time before redirection (success)	In case the automatic redirection option is enabled, you can define the delay in seconds before your buyer is redirected to your shop in case of a successful payment.
Message before redirection (success)	In case the automatic redirection option is enabled, you can define the message that will appear on the platform following a successful payment before your buyer is redirected to the shop. The default message is: "Redirection vers la boutique dans quelques instants" (Redirection to the shop in a moment)
Time before redirection (failure)	In case the automatic redirection option is enabled, you can define the delay in seconds before your buyer is redirected to your shop in case of a failed payment.
Message before redirection (failure)	In case the automatic redirection option is enabled, you can define the message that will appear on the gateway following a failed payment before your buyer is redirected to the shop. The default message is: "Redirection vers la boutique dans quelques instants" (Redirection to the shop in a moment)
Return mode	During the redirection to the shop, these parameters are returned to the shop in GET or POST modes. The GET mode is more convenient for the buyer as it allows to prevent the browser from displaying a pop-up window that indicates that the buyer is leaving an https environment for an http environment which obliges the buyer to click on "Accept" to return to the shop.

6. SETTING UP THE INSTANT PAYMENT NOTIFICATION URL

Several notification types are provided in the Back Office. They allow to manage events (payment abandoned by the buyer, payment canceled by the merchant, payment validated by the merchant, etc.) that will trigger a call to the merchant website and to configure the URL of the contact page.

To access notification rule management:

1. Sign into: <https://secure.payzen.eu/vads-merchant/>.
2. Go to the following menu: **Settings > Notification rules.**



Enabled	Reference
✗	Instant Payment Notification URL on batch authorization
✓	Instant Payment Notification URL at the end of the payment
✗	Instant Payment Notification URL on batch change
✗	Instant Payment Notification URL on cancellation
✗	Instant Payment Notification URL on an operation coming from the Back Office

Figure 2: Notification rules

Right click > Enable the rule if a red cross appears in the **Enabled** column of the following rules:

- Instant Payment Notification URL at the end of payment

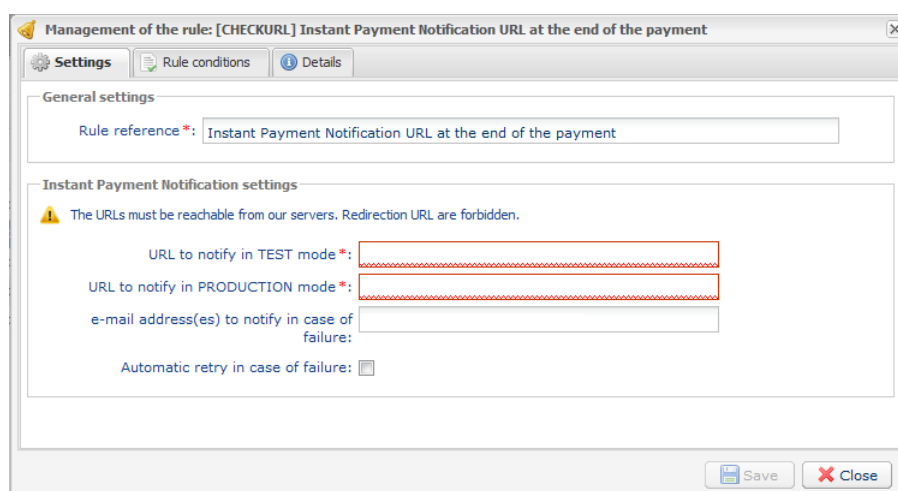
6.1. Setting up the Instant Payment Notification

In your PayZen Back Office, you must set up a URL that will be systematically called after a payment. It will inform the merchant website of the payment result even if your client has not clicked on return to the shop.

This parameter is called Instant Payment Notification at the end of payment.

To set up this notification:

1. Right-click **Instant Payment Notification URL at the end of payment.**
2. Select **Manage the rule.**
3. Enter the following URL in the fields **URL to call in TEST mode** and **URL to call in PRODUCTION mode**: http://www.my-domain.com/payment_payzen/process



4. Enter the **E-mail address(es) to notify in case of failure.**
5. To specify several e-mail addresses, separate them with a semi-colon.

6. Configure the **Automatic retry in case of failure**.

This option allows to automatically send notifications to the merchant website in case of failure, up to 4 times.

For more information, see chapter **Activating the automatic retry** of *Implementation guide Hosted Payment Page*.

7. Save the changes.

If the gateway is unable to access the URL of your page, an e-mail will be sent to the address specified in step 4.

It contains:

- the HTTP code of the encountered error
- parts of analysis depending on the error
- its consequences,
- instructions to resend the notification to the URL specified in step 3 from the PayZen Back Office .

6.2. Testing the Instant Payment Notification URL

In order to make sure that the Instant Payment Notification functions correctly, follow these steps:

1. Make sure that your URL is available online: your shop must neither be **in maintenance mode** nor be protected by an .htaccess file.
2. Make sure that your notification URL is available without any redirection.
 - a. To do this, paste your notification URL to the address bar of your browser and launch the search.
 - b. Make sure your URL did not change.

If your URL has changed, for example from "http" to "https" or "http://abc.net" to "http://www.abc.net", it means a redirection is active on your website. Then, copy the URL from the address bar and modify the URL filled in the configuration of all notification rules.
3. Make sure that the "Automatic redirection" option is disabled in the payment module settings.
4. Check that the **Instant Payment Notification URL at the end of payment** is populated in the PayZen Back Office (see above).
5. Make an order on your website and proceed to payment.
6. **Do not click on** "Return to shop" at the end of payment and close the current tab of your browser.

If the order has not been created in the Shopware Back Office, this means that the call has failed.

7. PROCEEDING TO TEST PHASE

Now that the payment module has been configured and you have specified the IPN URLs, you can move on to test phase in order to generate the production key.

The list of the tests to perform is provided in the PayZen Back Office, via the menu **Settings > Shop > Certificates**.

Tests control

Here is a summary of the tests performed up to now.
You must perform a valid payment for each row in the table below.
* manual payments are not taken into account ;
* test payments are deleted after 30 days ;
* the vads_page_action parameter must be set to PAYMENT.

CB	Mastercard	Maestro	Visa Electron	Payment date	Test status
4970100000000014	5970100300000018	5000550000000029	4917480000000008		✘
4970100000000055	5970100300000067	5000550000000052	4917480000000057		✘
4970100000000063	5970100300000075	5000550000000060	4917480000000065		✘
4970100000000071	5970100300000083	5000550000000078	4917480000000073		✘

Refresh the table

The "Generate the production certificate" button below will become operational once you have successfully completed all the required tests.
Click on the Refresh the table button to update the test progress.

Generate the production certificate

Each row of the list contains card numbers associated with the same scenario (i.e. 2 accepted payments and 2 refused payments).

Each column corresponds to a different card type: CB/VISA, MASTERCARD, MAESTRO, VISA ELECTRON.

To perform the test phase:

1. Make an order on your merchant website as if you were one of your buyers.
2. Select the payment method "**Payment by credit card**".
3. Once redirected to the payment page, select the card type of your choice.
4. Refer to the list of tests to identify the card number to use.
5. Once a test has been validated, its status is updated in the list. Click on **Refresh the table** button if the status has not been updated automatically.
6. Once the 4 tests have been validated, the **Generate the production certificate** button becomes available.

Tests control

Here is a summary of the tests performed up to now.
You must perform a valid payment for each row in the table below.
* manual payments are not taken into account ;
* test payments are deleted after 30 days ;
* the vads_page_action parameter must be set to PAYMENT.

CB	Mastercard	Maestro	Visa Electron	Payment date	Test status
4970100000000014	5970100300000018	5000550000000029	4917480000000008	02/08/2017 11:45:03	✔
4970100000000055	5970100300000067	5000550000000052	4917480000000057	02/08/2017 11:53:32	✔
4970100000000063	5970100300000075	5000550000000060	4917480000000065	02/08/2017 11:53:47	✔
4970100000000071	5970100300000083	5000550000000078	4917480000000073	02/08/2017 11:54:22	✔

Refresh the table

All the required tests have been successfully completed. You can now generate the production certificate by clicking on the below button.

Generate the production certificate

7. Click the **Generate the production certificate** button and accept the notification messages that will appear.

The production key is now available.

8. SHIFTING THE SHOP TO PRODUCTION MODE

After you receive a confirmation e-mail informing you that a certificate has been generated, you can configure the payment method by following the steps below:

- Retrieve the production certificate provided in the Back Office (**Settings > Shop > Certificates**).
- In the module configuration parameters:
 - Populate the **Production certificate** field.
 - Switch from TEST to PRODUCTION mode.
 - Save the changes.
- Make sure that you have specified the Instant Payment Notification URL in production mode as described in the chapter **Setting up the Instant Payment Notification URL**.

Once the production settings have been configured, we recommend to make a first real payment.

You will be able to cancel this payment in the Back Office. This transaction will not be captured in the bank.

Note on the production certificate:

For security reasons, this certificate will no longer be visible after the first transaction in production mode has been made from your shop.

Note on the TEST mode:

When your shop is in production mode, the TEST mode remains available.

To work in test mode, follow the steps below:

- Switch from PRODUCTION to TEST mode.
- Make sure that the **Test certificate** is correctly specified.
- Save the changes.

9. DOCUMENTATION UPDATE

As we constantly strive to improve the understanding and proper use of this product documentation, we welcome constructive remarks from our users.

Please send us your comments and suggestions to the following address: support@payzen.eu Do not forget to specify the version of Shopware and of the payment module you use.